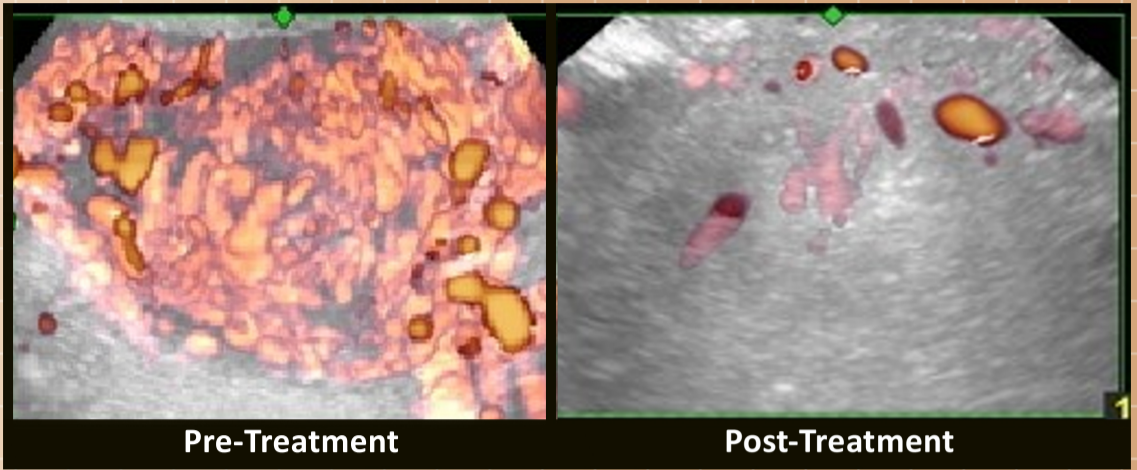
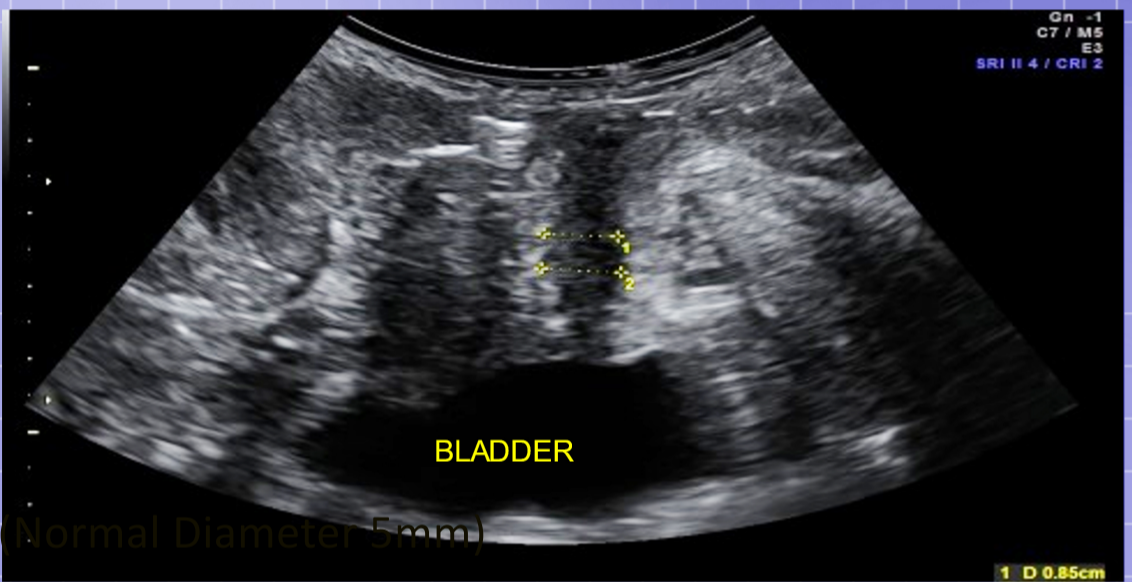


Slides from 2016 Grand Rounds Presentation for OB-GYN dept. at Mt Sinai Medical Center



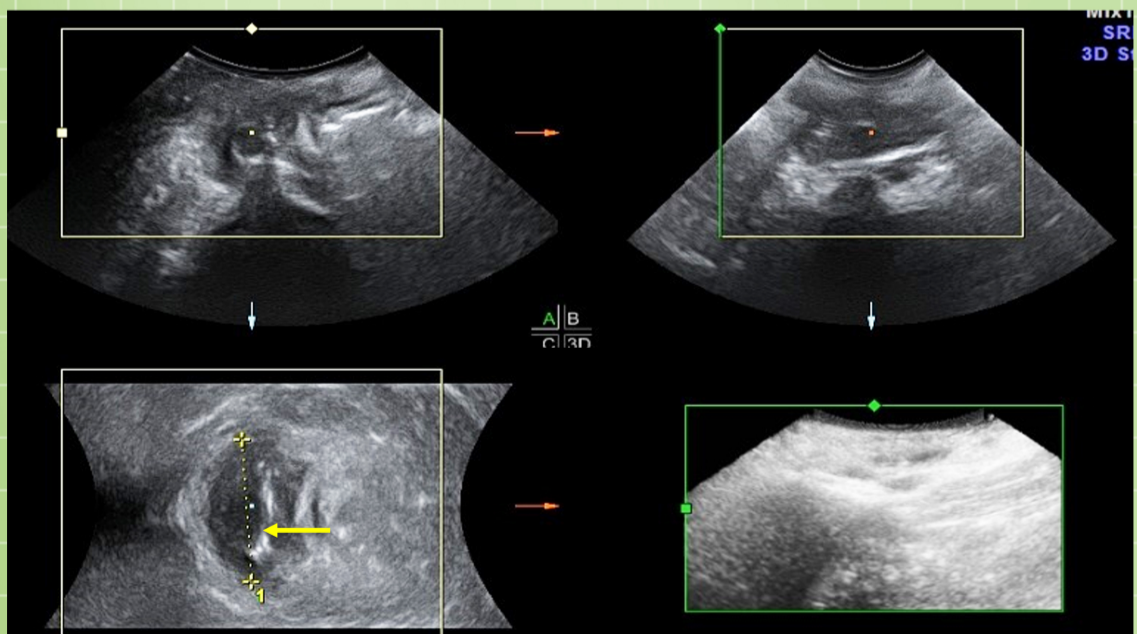
Endometrial Cancer

LEFT image shows multiple tortuous tumor arteries feeding an endometrial cancer. Tumor aggression is proportional to the number of abnormal vessels which may be quantitatively measured with 3D Doppler Histogram analysis for post treatment evaluation. RIGHT image shows marked decrease of tumor arterial vessel density. Focal thermal treatments are considered complete when neovascularity disappears.



Urethra Inflammation

Pelvic floor transperineal probe for incontinence demonstrates normal bladder outline without evidence of tumor or stone and depicts the abnormally widened urethra which is irregularly dilated above the normal 5mm diameter.



3D Tape Displacement

Real time image (3 orthogonal views + reconstruction at lower right) demonstrating fragmented segment of transvaginal tape impinging on the urethra.