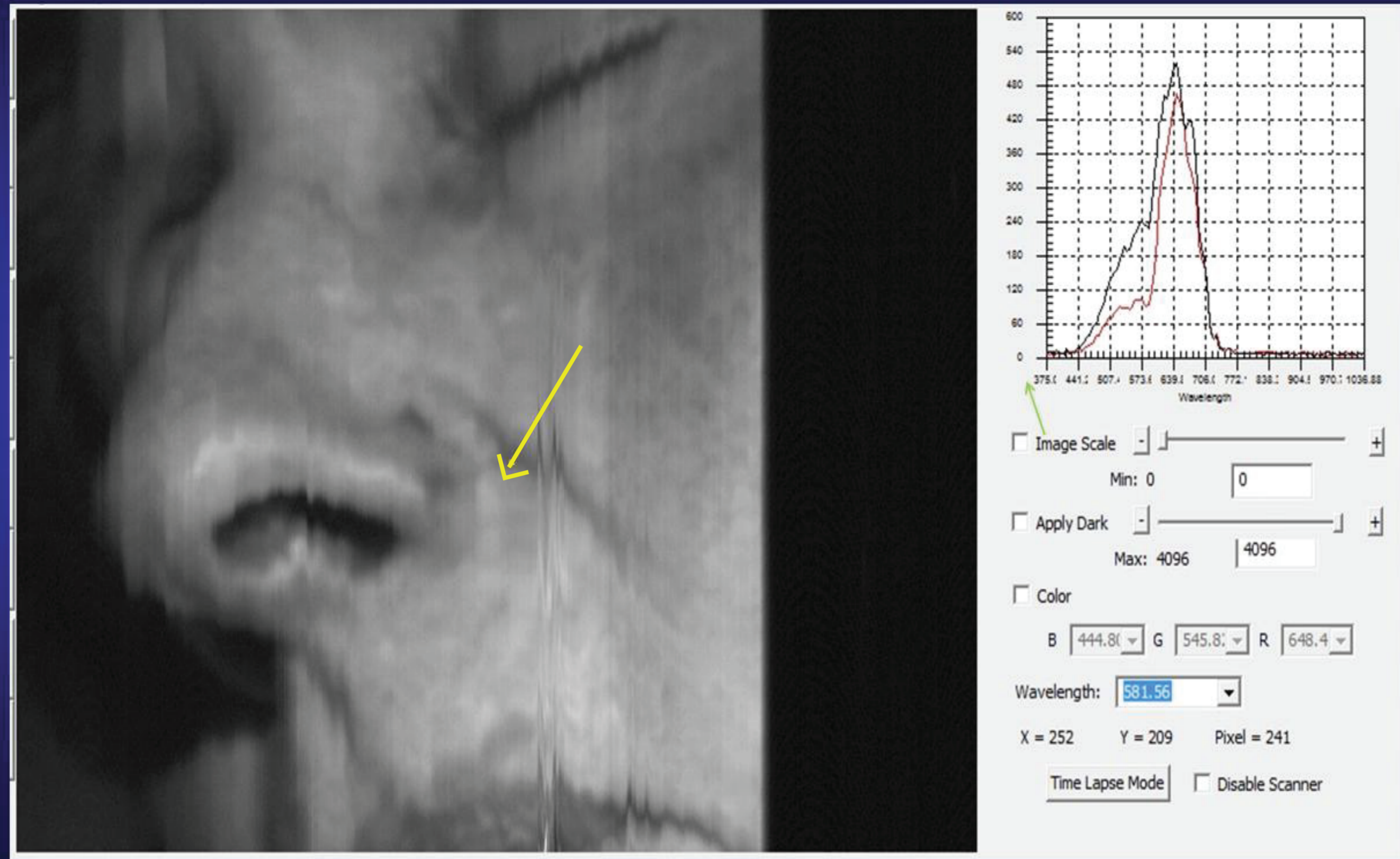


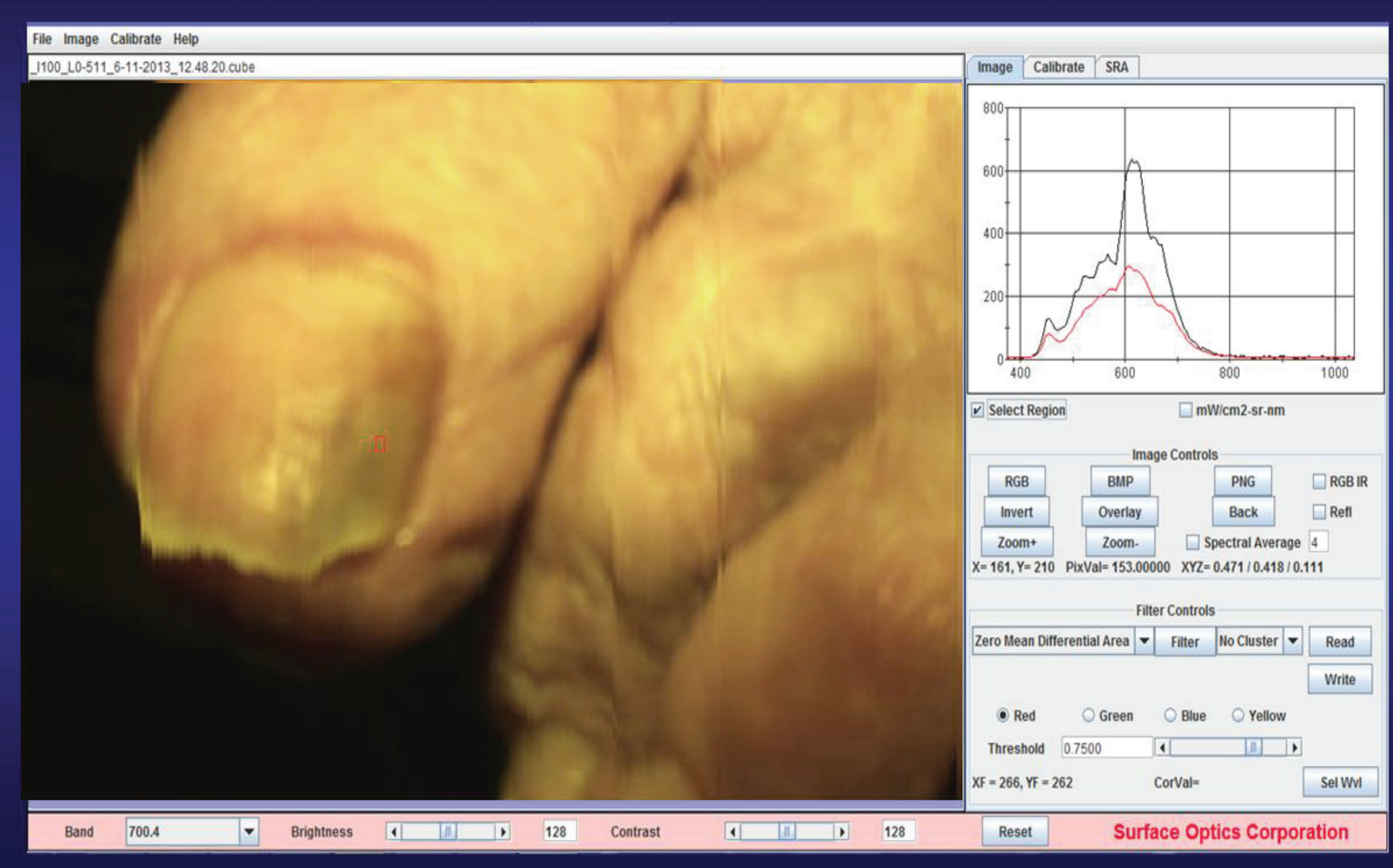
VASCULAR MAPPING OF TREATED MELANOMA METASTASES

By: Robert L. Bard, MD, PC, DABR, FASLMS

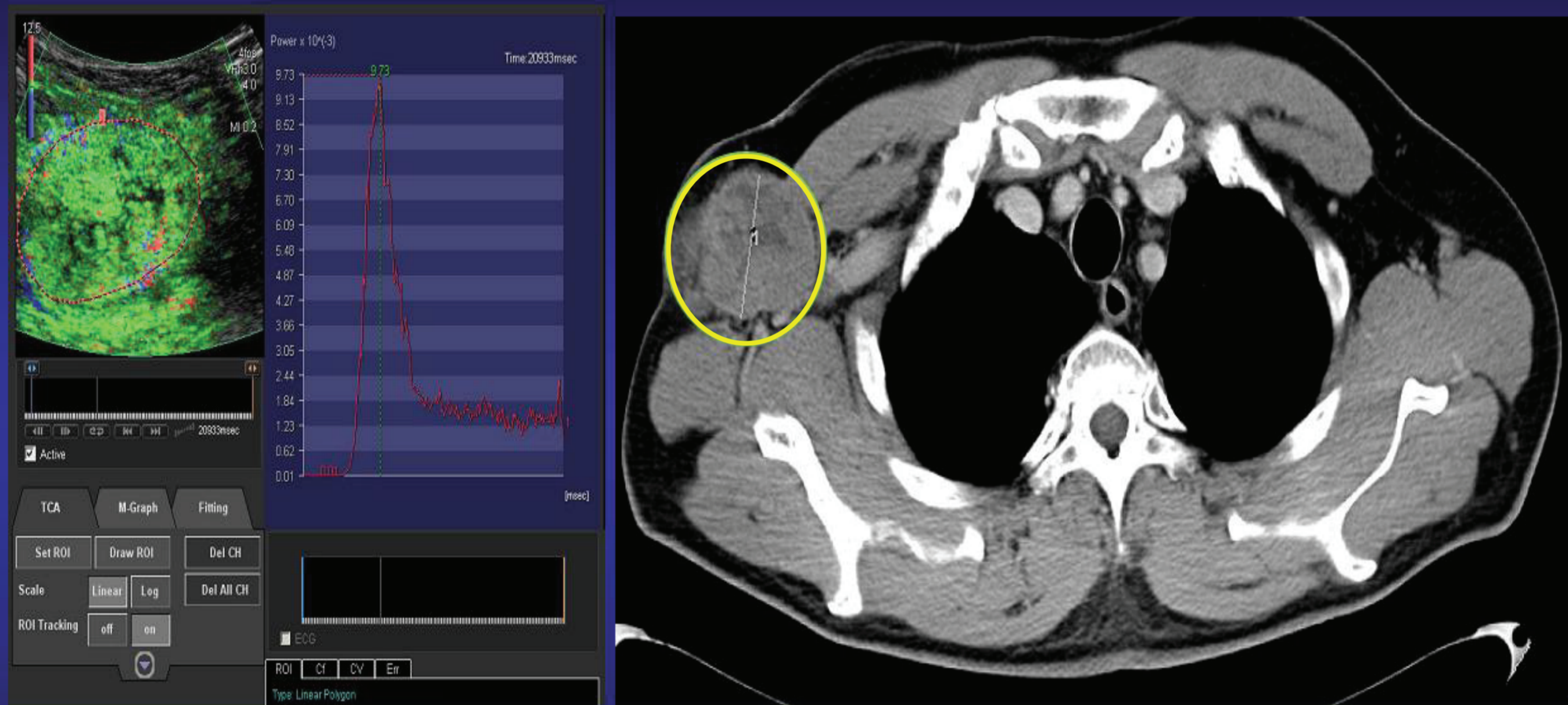
CYST: LOW O2 SATURATION



HIGH O2 CONTENT = MELANOMA



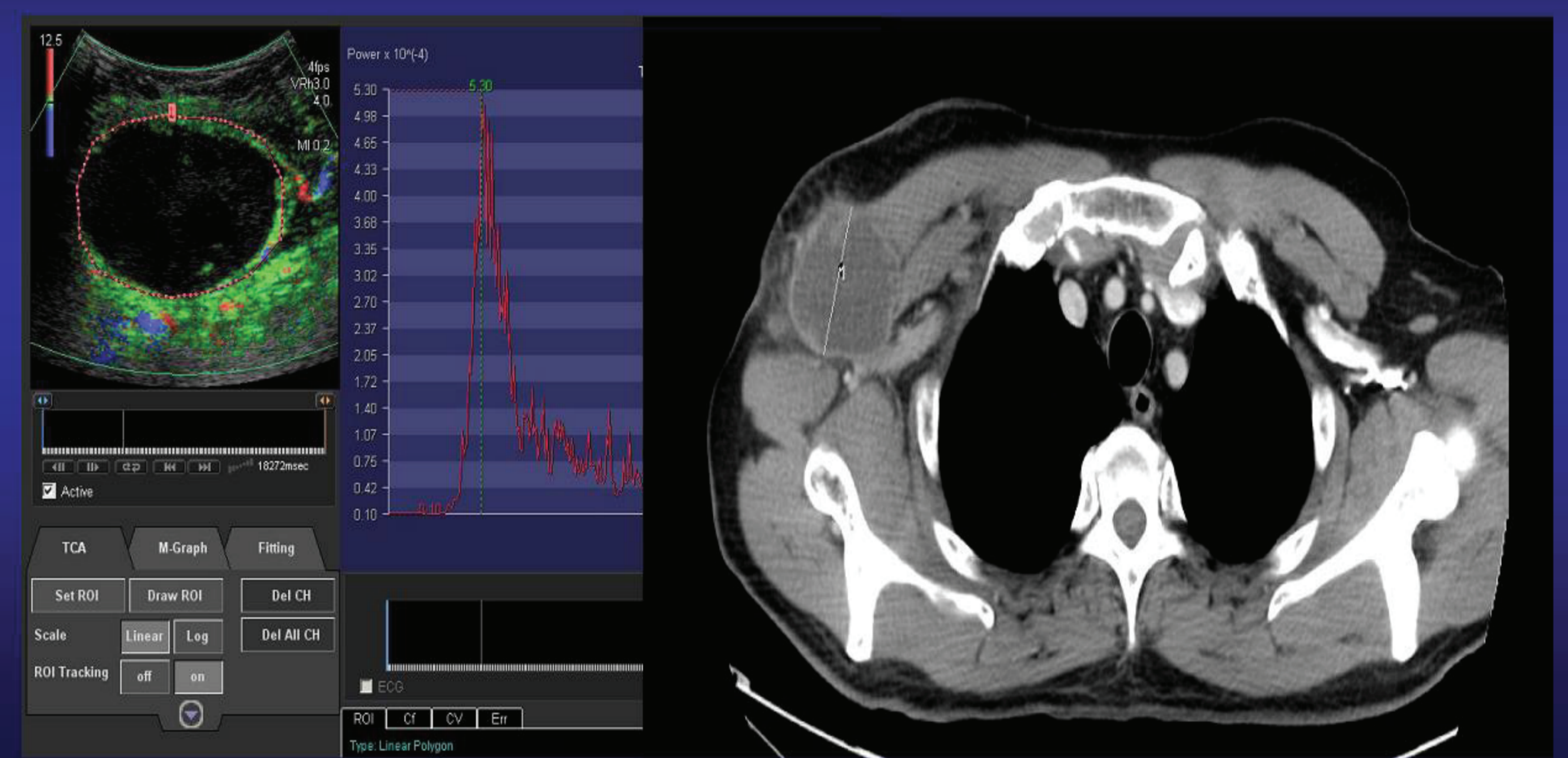
Metastatic melanoma treated with a combination: HDAC inhibitor + radiotherapy



CEUS=CONTRAST ENHANCED
ULTRASOUND and CT-scan at Baseline

Day 42

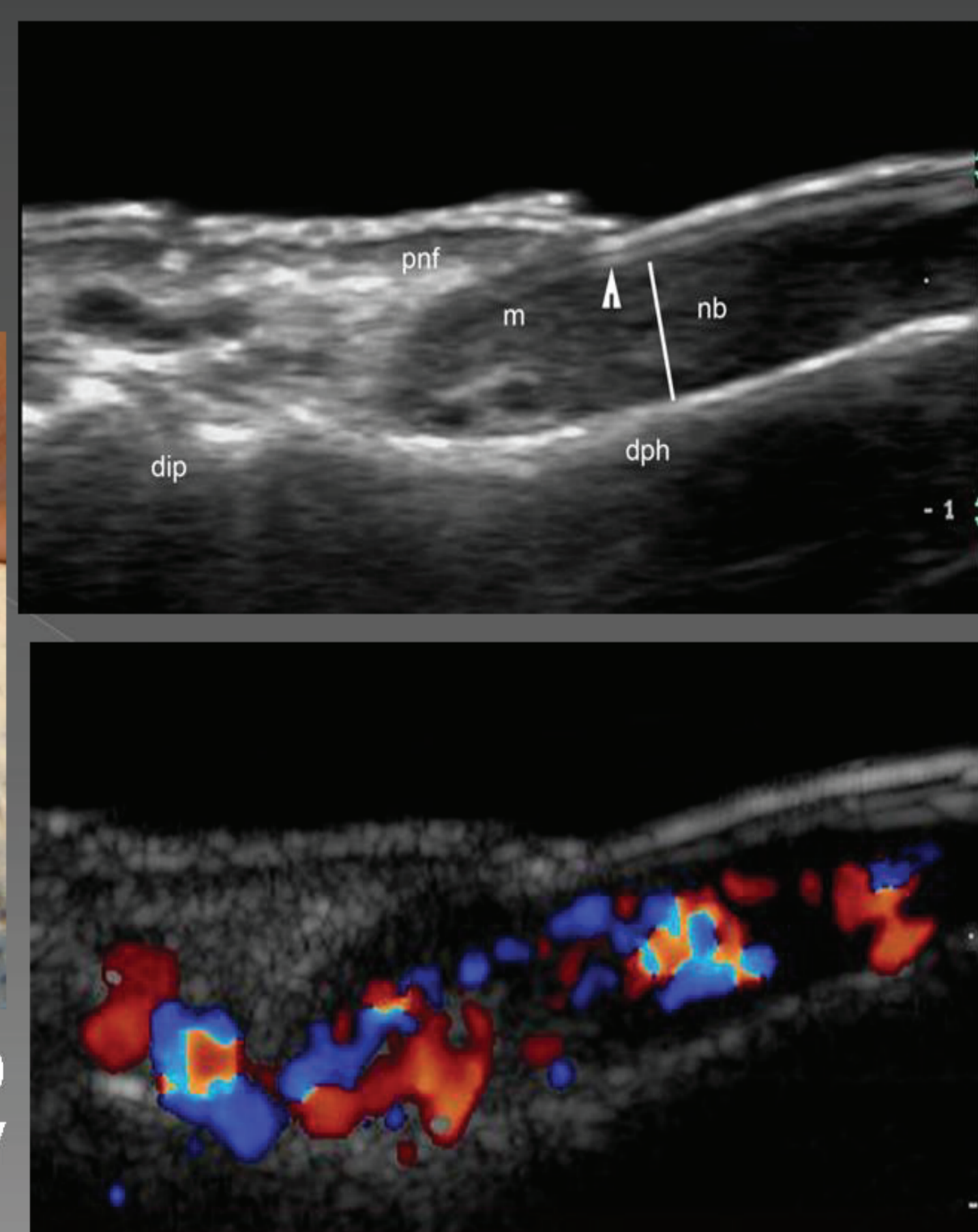
COMPLETE TRANSFORMATION INTO A CYST WITH DECREASED VOLUME (SIX WEEKS)



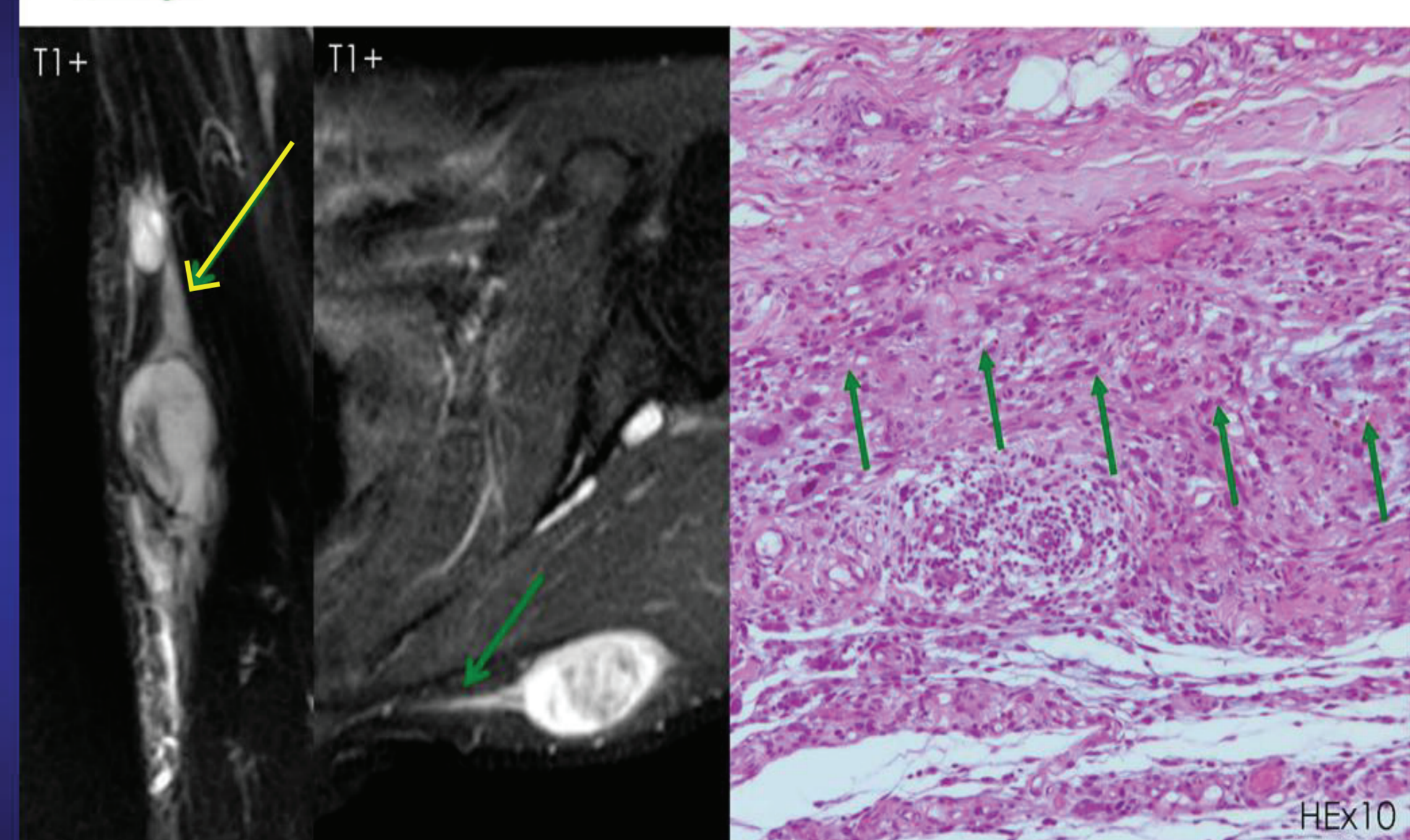
MELANOMA



METASTATIC POTENTIAL PROPORTIONAL TO NEOVASCULAR TUMOR VESSEL DENSITY



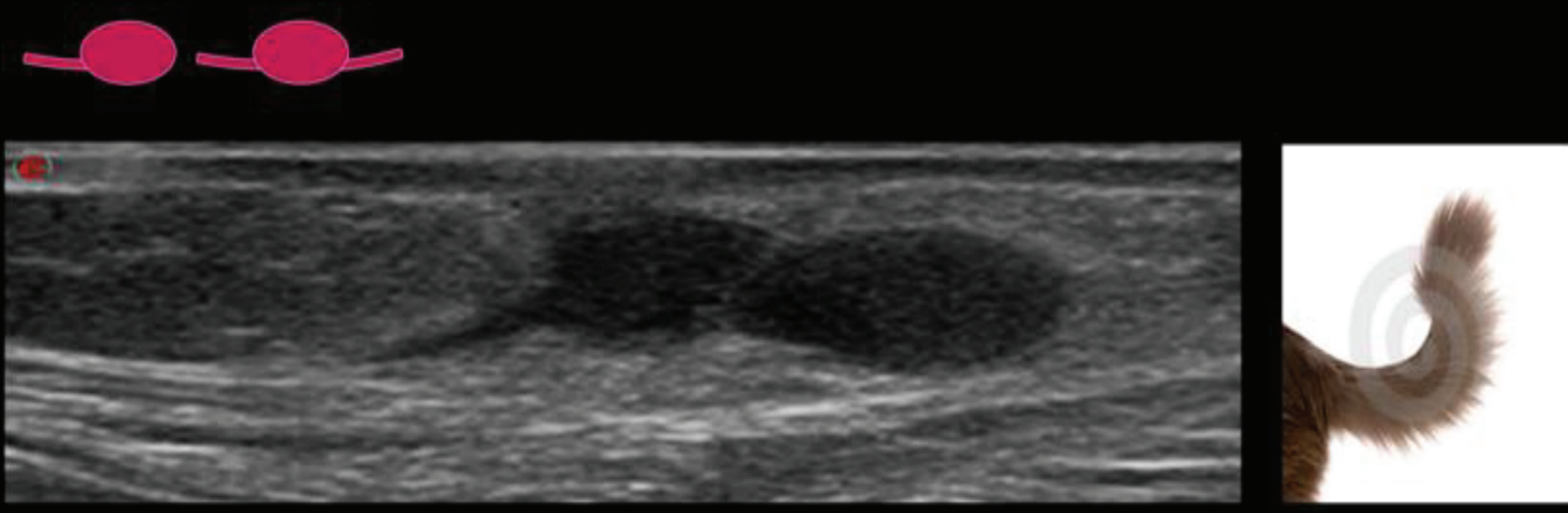
Tail sign



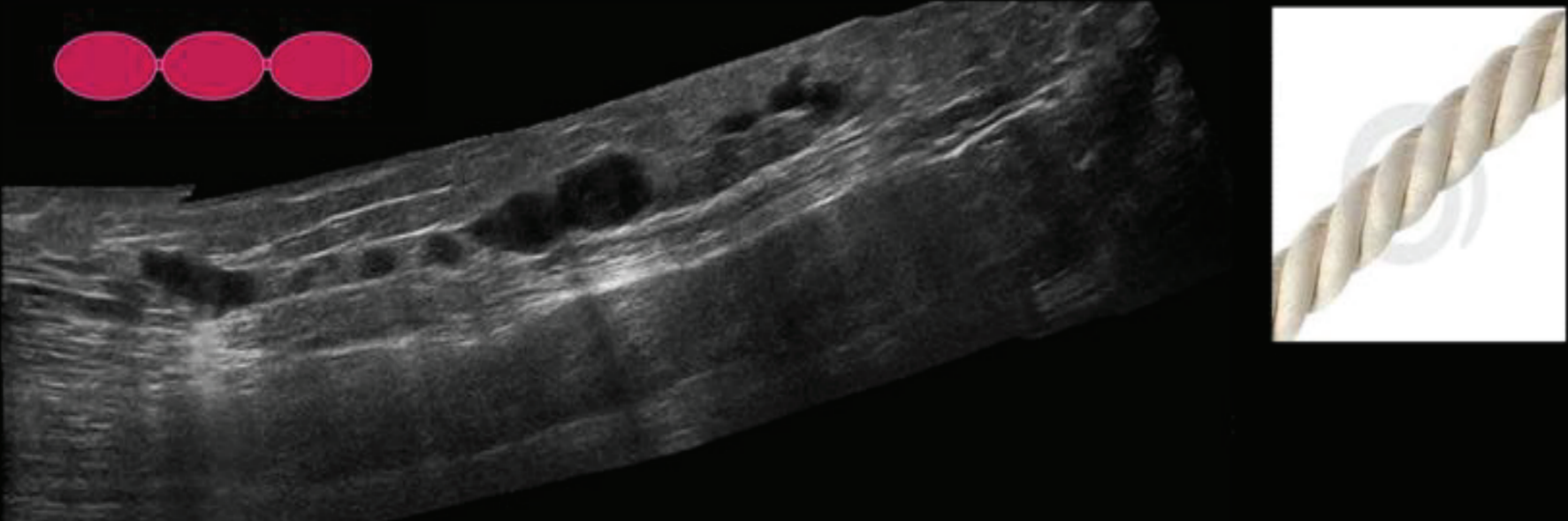
Prise de contraste des fascias adjacents (ex:MFS)

INTRANSIT SPREAD

TAIL SIGN

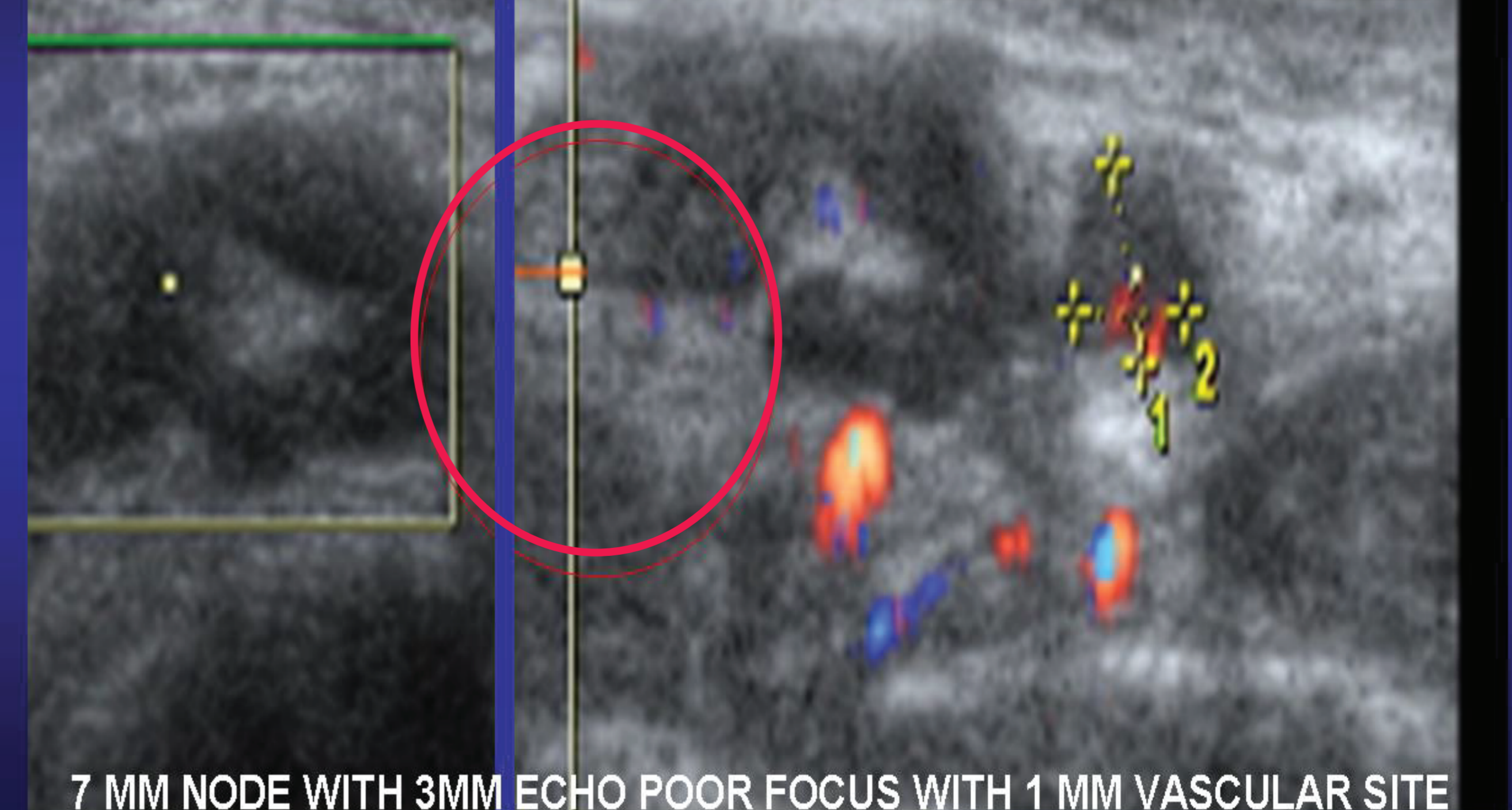


STRING SIGN



NON PALPABLE (+) NODE

NOTE ADJACENT PALPABLE 11 X 5 MM NORMAL LYMPH NODE



7 MM NODE WITH 3MM ECHO POOR FOCUS WITH 1 MM VASCULAR SITE