

# BARD CANCER DIAGNOSTICS & ANGIOFOUNDATION PILOT PROGRAMS

## **PROSTATE SCREENING INITIATIVE**

[www.ProstateScannow.org](http://www.ProstateScannow.org)

Prostate cancer is the second leading cause of cancer death in American men, behind lung cancer. About 1 man in 41 will die of prostate cancer. About 1 man in 9 will be diagnosed with prostate cancer during his lifetime. Bard Cancer Diagnostic Center and The AngioFoundation promotes the "ThinkProstate" awareness mission to the 50 and over crowd.- screening for prostate cancer is to find cancers that may be at high risk for spreading if not treated, and to find them early before they spread. Though the use of real-time Doppler Ultrasound technology, men can get an accurate reading in seconds!

## **PTSD TRANS-CRANIAL DOPPLER IMAGING**

<http://www.cranialscan.com/>

Uniting multi-disciplinary specialists to screen and monitor PTSD and other mental disorders through neurocranial imaging. Emotional traumas and stress influencers are scientifically aligned with anxiety, depression, behavioral disorders, drug/alcohol abuse and a wide list of physiological health issues. These symptoms are typically diagnosed by mental health professionals through observational science and behavioral analysis. But within the past 15 years, global advancements in transcranial imaging pioneered the ability to detect trauma-related issues in the brain through neurological imaging. Now, neurological stress can be identified clinically by monitoring chronic imbalance and changes in the neurochemical structure (or circuitry).

## **MALE BREAST CANCER SCAN & RECURRENCE PREVENTION**

<http://www.mbcscan.com/>

There are innate differences in the way Breast Cancer is diagnosed, screened and managed between the sexes. For men, Mammograms are not usually the device of choice unless the patient is BRCA Positive, has Klinefelter's syndrome or has contralateral breast cancer. Neither is MRI commonly used for average monitoring. Identifying Male Breast Cancer is a specialized discipline with many innate differences from female breast cancer. Under the diagnostic leadership of globally-recognized and published authority in digital cancer scanning pioneer, men are in the safest hands possible when it comes to identifying any and all anomalies and potential cancer markers. His expertise spans decades of advanced technical innovations with the unmatched ability to seek out and analyze tumors, cysts and all hints of possible cancer.

## **CANCER SCREENING FOR FIRST RESPONDERS & 9/11 SURVIVORS**

<http://www.healthscannyc.org/> | [Lung Screening Prog. Printable PDF](#)

Environmental toxins and carcinogens often arise from chemicals propelled at high temperatures where a rescuer exposed to this can have lasting effects on his or her health. Our organization is founded by a joint advisory partnership between first responders & survivors exposed to 9/11 and medical professionals who are experienced working with firefighters and 9/11 cancer cases. We are also patient advocates whose public awareness and educational efforts are dedicated to "getting the word out" about the latest information pertaining to the health and safety of all responders. Together, we have established a set of resource efforts online providing useful information and access to other cancer foundations, funding resources, support groups, clinical facilities and treatment innovation options and other ways that may support existing patients or the prevention and early detection to help our first responders.

## **PHYSICAL TRAUMA SCANS / WORK RELATED INJURIES**

<http://www.barddiagnostics.com/>

Accurate Diagnosis of Chronic Injuries includes TENDONS, MUSCLE, BONE AND JOINT INJURIES. Ultrasound is more specific in diagnosing musculoskeletal diseases than MRI- especially for ankle, hand & rotator cuff areas. Strains may be separated from more serious muscle ruptures. Hematomas and fibrous scarring may be documented over time. Abnormal motion of muscle and tendon tracking is observable. Under sonogram guidance, a needle is often placed into the patient's tender bleeding site to remove the blood and hasten recovery. Two dimensional xrays often miss fractures on the curved or rounded areas. Occult fractures of the pelvis, ribs, hips, shoulder, fingers and ankle missed by conventional x-rays may be detected. Stress fractures and shin splints show up 2 weeks earlier than on regular x-rays. Targeted scans detect five times as many rib fractures as conventional radiographs. Diagnosing these injuries are more efficiently achieved through the use of radiological advancements of advanced Doppler technology to identify long and short term effects of the injury as well as the efficacy of their treatments.

## **"GET CHECKED NOW" PROGRAM: EARLY PREVENTION & THE SECOND OPINION**

<http://prevention101.org/>

CANCER PREVENTION can be closely aligned with EARLY DETECTION (diagnostic program) and a HEALTHY LIFESTYLE. But from the perspective of a personal upgrade, it is greatly proven that smart nutrition, toxin prevention (smoking, alcohol, drug abuse control), Stress management and Immune system support are all main ingredients to the prevention of cancers. These same protocols, for those who recently underwent cancer treatment, are what medical experts and wellness professionals prescribe to STAY IN REMISSION. If you have a symptom or a screening test result that suggests cancer, your doctor must find out whether it is due to cancer or some other cause. The doctor may start by asking about your personal and family medical history and do a physical exam. The doctor also may order lab tests, imaging tests (scans), or other tests or procedures. You may also need a biopsy, which is often the only way to tell for sure if you have cancer.

## **REMOTE / PORTABLE EMERGENCY DIAGNOSTIC IMAGING SOLUTIONS (R.E.D.S.) BETA**

[www.BardDiagnostics.com/reds.html](http://www.BardDiagnostics.com/reds.html)

### **ADVANCED PORTABLE ULTRASOUND UNITS**

Our catalog of portable Doppler Ultrasound units are available to cover your most challenging demands. Each "battle tested" unit is built with durable aircraft-grade aluminum and cold-rolled steel for endurance and consistent performance and accuracy. With enhanced Superharmonic Imaging and the advanced scanning power to quickly identify the deepest musculoskeletal issues, you've got the strength of DIAGNOSTIC CONFIDENCE traveling with you in every emergency call!

**For more information, contact the Special Programs Division at the  
NY Cancer Resource Alliance @ 631-920-5757**



## LUNG SCREENING PACKAGE 1

|                                |  |
|--------------------------------|--|
| Objectives:                    | <p>Analyze the respiratory system to detect for</p> <ul style="list-style-type: none"> <li>▪ Neck cancers: thyroid and cancerous glands</li> <li>▪ Vocal cord anomalies: Atypical motion/tumors</li> <li>▪ infection: pneumonia, occult congestive heart failure</li> <li>▪ Pleural lesions: fluid, mesothelioma, missed rib fracture</li> </ul>   |
| Target areas covered:          | <ul style="list-style-type: none"> <li>▪ Neck</li> <li>▪ Chest wall + heart if indicated</li> <li>▪ Diaphragms including adjacent abdomen organs</li> </ul>  |
| Diagnostic Technology applied: | <ul style="list-style-type: none"> <li>▪ Sonography + m-mode diaphragm motion analysis</li> <li>▪ Color Doppler</li> <li>▪ 3D Spectral Doppler</li> <li>▪ 4D Imaging</li> </ul> <p><b>SONOGRAM CHEST WALL, NECK AND ABDOMEN</b><br/>           Sonography can be performed in multiple scan planes with real time 3-D image analysis with power and spectral Doppler flows in minutes.</p> <p><b>SONOFLUOROSCOPY</b> is performed in multiple scan planes with varying transducer frequencies of lung motion</p> <p><b>3D/4D IMAGE RECONSTRUCTION</b><br/>           Prebiopsy planning of lesions that are suspicious and where biopsy is indicated by computer histogram analysis.</p> <p><b>SPECTRAL DOPPLER</b><br/>           Search for hyperemia of any lesions. Power Doppler will show normal flows in the adjacent arteries/veins. Spectral flows will show normal triphasic waveforms. 3 D searches for suspicious lesion abnormalities and measures focal tumor vascularity to determine aggressive potential.</p> |

# DIGITAL DIAGNOSTIC INNOVATIONS



## Advanced 3D Sonogram: Non-Invasive Diagnosis of FIRE & BURN RELATED INJURIES



### Subdermal Foreign Bodies

Splinters, thorns, glass and other fragments under the skin invisible to the observer



### Eye Injuries / Inflammation

Advanced & accurate evaluation of eye damage through closed or swollen eyelid



### Collapsed Lung & Fluids

Diagnosis of abnormal collection of air / fluid in the lung tissue or the chest wall



### Advanced Fracture Detection

X-rays miss 90% of fractures in the rib, collar bone, wrist, finger and other rounded bones

## Accurate Diagnosis of Chronic Injuries

**TENDON:** Ultrasound is more specific in diagnosing tendon disease than MRI- especially in the ankle, hand and rotator cuff areas. This is the preferred diagnostic tool for tendinitis and tears because:

- The patient points towards the pain and may take the probe and personally guide it to the injured areas
- The exam is real time; images are immediately observed and the sonographer can see pathology instantaneously even in moving children, avoiding sedation
- MRI has 1mm resolution while high frequency ultrasound can provide 0.2mm images

**MUSCLE:** Strains may be separated from more serious muscle ruptures. Hematomas and fibrous scarring may be documented over time. Abnormal motion of muscle and tendon tracking is observable. Under sonogram guidance, a needle is often placed into the patient's tender bleeding site to remove the blood and hasten recovery.

**BONE:** two dimensional xrays often miss fractures on the curved or rounded areas. Occult fractures of the pelvis, ribs, hips, shoulder, fingers and ankle missed by conventional x-rays may be detected. Stress fractures and shin splints show up 2 weeks earlier than on regular x rays. Targeted scans detect five times as many rib fractures as conventional radiographs.

**JOINTS:** Fluid collections diagnosed and aspirated under US guidance. Cartilage erosion monitored. Loose fragments from bone and cartilage and pannus (inflamed joint lining) are imaged more clearly than with MRI scans. A common surgical emergency is a blood clot to the lung from the damaged veins in the back of the knee (deep venous thrombosis). 98% of the time, calf tenderness is caused by a benign cyst in the joint which we diagnose and remove immediately by aspiration of the fluid using sonogram guidance.



121 E 60th St. New York, NY 10022

For more information on our Advanced Digital Diagnostic Imaging or to set up an appointment, call us today at 212.355.7017. You can also visit our website at: [www.BardDiagnostics.com](http://www.BardDiagnostics.com)



# FIGHT CANCER RECURRENCE



**Proactive Education • Lifestyle Upgrade • Regular Monitoring**



*"I contracted Male Breast Cancer TWICE, just when I thought it was gone the first time. I learned that cancer doesn't give up - so neither should you! Stay smart, be proactive and follow a RECURRENCE PREVENTION plan to KEEP CANCER AWAY."*

**MARC FUTTERWEIT**  
Survivor/Senior Ambassador of  
The Male Breast Cancer Coalition  
([www.mbcglobal.org](http://www.mbcglobal.org))

When it comes to cancer, it's been known for LIGHTNING TO STRIKE TWICE. Doctors will never guarantee that your cancer is gone forever, even after the remission period. The American Medical Community suggests that all survivors of cancer should subscribe to proper health and nutritional standards to support continued prevention. Take the right steps to OUTSMART CANCER TODAY by learning how recurrence works. Start by managing a healthy (and organic) lifestyle, support a regular fitness regimen and schedule an annual monitoring program with an advanced imaging professional or physician specializing in cancer diagnostics to maintain regular screening protocols for early detection or to help prevent cancer recurrence.



For more information about cancer screening solutions and prevention programs, visit: [AwarenessforaCure.org](http://AwarenessforaCure.org) or call 631-920-5757

Awareness for a Cure™ is an educational branch of a union of non-profit organizations (501c3) Biofoundation for Angiogenesis Research and Stoll Integrative Medical Research and is supported by the NY Cancer Resource Alliance.

The contents of this advertisement and the information contained on the website [www.NYCRALLIANCE.org](http://www.NYCRALLIANCE.org) / [www.AWARENESSFORACURE.org](http://www.AWARENESSFORACURE.org) are for informational purposes only and do not constitute (or is a substitute for) medical advice diagnosis, or treatment. Any/all sponsors or spokesperson(s) mentioned in this ad takes no liability for the performance or clinical outcome of any information provided in this ad or websites presented herein. Always seek the advice of a physician or other qualified health provider with any questions you may have regarding a medical condition.



# 5 MINUTES CAN SAVE YOUR LIFE

## Digital Cancer Screening for Early Detection



Take advantage of our advanced 3D/4D Digital Cancer Scanning, Early Detection & Prevention using the latest non-invasive diagnostic innovations to identify anomalies or potential cancerous tumors. **NO MORE BIOPSIES** or dangerous contrasts. Our technologies are highly accurate and captures conclusive studies in a matter of minutes.

**IT'S ALL A MATTER OF TIME!** Don't take chances on guesswork or outdated scanning practices! Get the answers you need about your health and invest in your longevity.

**BARD  
CANCER  
DIAGNOSTICS**  
ADVANCED IMAGING INNOVATIONS

Call for an appointment today at  
**212.355.7017**

[Appt@BardCancerDiagnostics.com](mailto:Appt@BardCancerDiagnostics.com)  
121 E 60th St. #6A New York, NY 10022

[www.BardCancerDiagnostics.com](http://www.BardCancerDiagnostics.com)



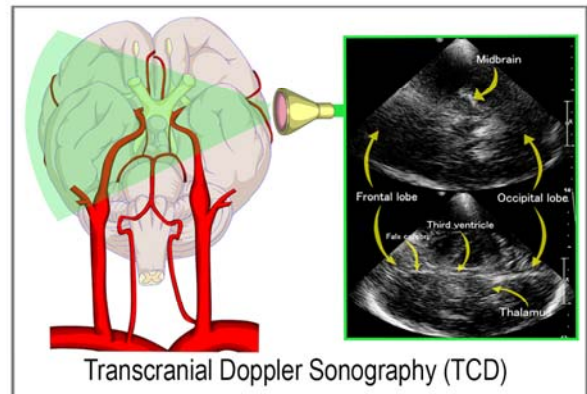
# A Safe Alternative to DIAGNOSING and MONITORING PTSD

The advanced technology of TRANSCRANIAL DOPPLER SONOGRAPHY (TCD) has been widely recognized in European medical communities since 1982. Aply called "the doctor's stethoscope of the brain", TCD has been used for intracerebral scanning of blood circulation, vasomotor reactivity, vertebrobasilar flow and blood vessel vasospasm to monitor treatment validation and identifying various stressors in the brain.

Dr. Robert Bard of Bard Diagnostic Imaging (NYC) is a leading imaging specialist for CANCER screening but is also one of the most sought after experts in advanced clinical scanning and screening of complex & trauma-based issues. This scanning program supports the mental health community, especially those who specialize in the treatment of PTSD by introducing the benefits of TCD technology. His extensive training and unmatched field experience with innovations like TCD has brought great success in countless clinical research projects and exploratory development of medicines while confirming treatment, efficacies and valuation. The Doppler Ultrasound system is recognized for its real-time accuracy over all other diagnostic solutions on the American market - in addition to being a safe, radiation-free alternative.

## LET'S REVOLUTIONIZE DIAGNOSTIC IMAGING TOGETHER

We are looking for five (5) test cases who are willing to participate in our fee-waived TCD performance test program. Our imaging diagnostic experts are prepared to work directly with clinical professionals in the Midtown area under this private study who are currently treating patients for PTSD. All results are confidential. For more information, call today at: 212.355.7017



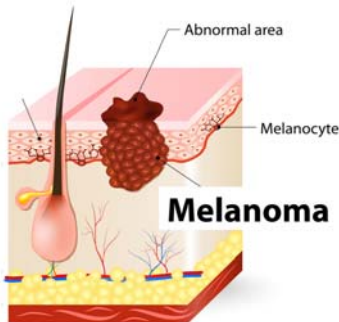
[www.BardClinicalTrials.com](http://www.BardClinicalTrials.com)

121 E 60th St Suite # 6A  
New York, NY 10022  
(212) 355-7017





# “ARE YOU SURE IT’S NOTHING?”



## 2019- Major rise in Melanoma & Skin Cancer cases Not all problems are visible to the **NAKED EYE?**

Did you know that skin cancer is the most common form of cancer in the United States? According to the American Cancer Society, statistics for 2019 Melanoma show an estimate of about 96,000 cases and about 7200 are expected to die from Melanoma. Factors that may increase the risk include excessive sun exposure, toxic contaminants or genetic predisposition--

but an added proponent to any skin cancer or Melanoma case is NEGLIGENCE and WISHFUL THINKING! This is when you ignore unusual signs or checkups about skin anomalies that could prove to be a major problem.

BARD CANCER DIAGNOSTICS provides a deep subdermal scan to digitally analyze what's really going on underneath- in a matter of minutes! With our Advanced 3D/4D Doppler technology, our patients get the most comprehensive study of any warts, moles and any other skin abnormalities while getting true peace of mind about what "could be" a problem. Eliminate the guesswork with expert skin diagnostics. Our latest innovations and imaging specialists are the dermatologist's best friend when it comes to confirming skin conditions or getting a deeper skin examination. "GET CHECKED NOW!" - with the most advanced skin cancer scans made easy.



121 E 60th St Suite # 6A  
New York, NY 10022  
(212) 355-7017  
appt@cancerscan.com

[www.CancerScan.com](http://www.CancerScan.com)

Insurance & Medicare Accepted







# Remote Emergency Diagnostic Solutions



Terason  
USmart 3300  
Ultrasound

## WHEN SECONDS COUNT...

Bard Diagnostic Imaging brings you the most advanced upgrades in portable scanning technology.

**R.E.D.S. - Remote Emergency Diagnostic Solutions** completes your emergency response arsenal with state of the art portable Advanced Ultrasonic & Doppler Technology. On land, air, sea or space, R.E.D.S. is designed to provide accurate ER lab response to quickly (within seconds) scan & identify any and all injuries on location- in REAL TIME.

Our catalog of portable Doppler Ultrasound units are available to cover your most challenging demands. Each "battle tested" unit is built with durable aircraft-grade aluminum and cold-rolled steel for endurance and consistent performance and accuracy. With enhanced Superharmonic Imaging and the advanced scanning power to quickly identify the deepest musculoskeletal issues, you've got the strength of **DIAGNOSTIC CONFIDENCE** traveling with you in every emergency call!



PARAMEDIC SERVICES

EMERGENCY ROOMS

COMBAT FIELD MEDICS

COAST GUARD RESCUE

MEDIVAC (AIR)

NAVY SHIPS

YACHTS & CRUISE LINES

COMMERCIAL AIRLINES

LAW ENFORCEMENT

SEARCH & RESCUE

INTL. SPACE STATION



## CENTRAL R.E.D.S. SUPPORT CENTER

All REDS-rated technologies are certified by world imaging expert, Dr. Robert Bard whose custom-designed portable imaging advancements for FIELD USE is designed to transmit your scanned files via WIFI to our central medical base where our professional diagnostic radiologists are ready to analyze all your patient's subdermal injuries and detect any potential LAND MINES that may not be immediately apparent. This makes communicating the patient's case with any hospital truly SEAMLESS and time-responsive!

**FOR MORE INFORMATION OR TO ORDER, CONTACT US TODAY AT:**

**212.355.7017 or visit: [www.BardDiagnostics.com](http://www.BardDiagnostics.com)**



# Cancer imaging pioneer launches Grassroots Screening Programs targeting Public Health Concerns

Since 1974, Dr. Robert Bard has been the imaging partner of choice for countless medical centers and private practitioners in the NYC area and the Northeast region. He has authored an expansive list of medical texts and articles in medical journals about cancer imaging and reports about technological innovations. Moreover, he remains active throughout his unending career by having presented in over 200 medical summits, symposiums and conferences both domestic and in Europe.

Dr. Bard holds a vital place in clinical diagnostic history having worked directly with some of the most acclaimed leaders in NY medical science. In 1976, he collaborated with Dr. Henry Leis Jr., (1915-2003) one of the clinical founders and the first publisher about mammography as a non-invasive cancer imaging program. Together, they joined the effects of the mammogram and ultrasound technology to form the first truly complete breast cancer screening- a discipline which is still being practiced in medical centers today. Dr. Bard also worked closely with leading dermatologist Dr. Norman Orentreich (1922-2019) – pioneer of customized skin care & led an extensive medical research on the body's aging effects. He left a legacy which included the establishment of CLINIQUE's product development as well as carrying the title as the "father of modern hair transplantation". Another recognized medical leader and former partner of Dr. Bard was Dr. Selig Strax (1909-1999) from Mt. Sinal Medical Center- who introduced the first lumpectomy operation for breast conservation- a proven method adopted throughout the US medical community. These pioneers and many others relied heavily on Dr. Bard's expertise to help change the shape of patient treatment and medical research today.

Where most practitioners may look upon a 40+ year commitment as a time to bring their work to a

close, one could find Dr. Bard accelerating in performance and his ambition to build. In 2001, Dr. Bard established a non-profit medical research and educational institute called The Biofoundation for Angiogenesis Research & Development- formalizing his pursuits to build new collaborative partnerships to lead clinical trials, public awareness projects, funding scholarships, erecting public cancer screening programs and publishing new findings in health research & technologies.

In addition, Dr. Bard spearheaded specialized diagnostic programs for rare yet controversial interest groups such as: Male Breast Cancer victims, First Responders cancers and Breast Implant Lymphomas- to name a few. His "CancerScan" series also has a direct partnership branch serving progress imaging for the patients of specialized modalities like Stem Cell practitioners and Cannabis physicians. Through the public sector, his leadership role at the NY Cancer Resource Alliance helped to form the grassroots "Get Checked Now!" campaign for community groups to promote the message of a proactive lifestyle toward vigilance for Early Detection and Prevention.

Dr. Bard continues to stay current on all health trends- including treatment solutions and innovations that are evident in shaping the world of treatment. Both his practice and his educational efforts support NON-INVASIVE pursuits as he believes this is the key direction clinical medicine. He themes the "FUTURE WITHOUT SCALPEL" message through much of his writings and seminars- earmarking the evolution of ultrasonic & laser advancements. Oftentimes, his presentations tend to conclude with correlating between our latest diagnostic and treatment approaches to that of the Sci-Fi medical devices.

Dr. Bard maintains a strong following of clinical alliances and joint venture collaboration partners. "I am hoping Dr. Bard's advanced ultrasonic screening becomes the foundation for development of future protocols for screening and diagnostic imaging for all patients. Hopefully, these protocols using this ultrasound technology can be incorporated with other safety programs to create the best medical care possible for all cancer patients," states Dr. Stephen Chagares, New Jersey breast surgeon. ■

